

# POB CSD K-Center Q&A

## Educational Services

### 1. What are the educational reasons for closing the K-Center?

- a. *The movement of Kindergarten students to their home schools will result in one less transition in the educational experience of our students. Each time a student makes a transition there are adjustments that have to be made in becoming familiar with the new surroundings and learning the social norms of a new environment. This is angst producing and detracts from learning at a special time in the start of a new school year.*
- b. *Currently our early learners experience three schools in the first three years of schooling; Pre-school, to Kindergarten, to first grade.. Under the new plan we eliminate one transition, allowing students to make meaningful connections with a single school, friends and a caring staff for the next five years of their education.*
- c. *The movement of Kindergarten students to their home schools will improve articulation between the Kindergarten and First Grade teachers. Students begin the first grade in an environment with personnel they are already familiar with and teachers are able to quickly access information from the prior year's teachers to assist in making a smooth transition for all learners.*
- d. *The movement of Kindergarten students to their home schools will result in enhanced continuity of services. Service providers will remain the same, K-4. Currently students with special instructional needs are more likely to change specialists as they move from Kindergarten to elementary school. The learning curve for targeting the instructional needs is lessened when students are delivered services from the same provider over their transition from K to Grade 1 and thereafter.*
- e. *Several studies have shown that larger grade spans encourage across-grade teacher cooperation and communication thereby promoting continuity of instruction between grades (Epstein,1990; Paglin & Fager, 1997)*
- f. *A wider inclusion of grades within a school creates more opportunities for younger children to interact with older peers, who can model the behavioral and academic expectations of later grades (Epstein,1990). Additionally a wider grade span provides increased opportunities for interactions in such activities as reading buddies and inter-school projects.*

### 2. Are there plans to reduce services for students in K-4?

*Assuming the same budgetary climate exists, all services currently being offered in K-4 will be maintained through the transition to K-4 elementary schools. In particular, Board of Education Guidelines for class size will remain unchanged.*

### 3. Library, Art, Music, Gym—Will these instructional services still be offered in the same manner as they are now for students? Will we have Art or Music on a cart?

*There are dedicated spaces in all elementary schools for Art, Music, Gym and Library. Assuming the same budgetary climate as currently exists, all services currently being offered will continue*

*and hopefully be enhanced as we look to improve offerings in all of our programs. One of our enduring qualities as a district is our commitment to Music and Art; that is an essential feature of all future plans for our district.*

4. **Is the current playground equipment appropriate for younger children? If not, how will this be discussed?**

*Each year we evaluate the playground equipment in all of our schools and target resources to maintain a safe environment for our children. Each playground is currently being evaluated and if equipment is deemed required for our youngest students we will take the necessary steps to update our playgrounds before September 1, 2016.*

5. **Will Kindergarten children continue with the American Sign Language program?**

*The Kindergarten students will continue to enjoy instruction in American Sign Language in their home schools after September 1, 2016*

6. **How will the XR program work?**

*All support programs, including XR will continue in the home schools in the current format*

7. **The K Center has always had a unique cultural arts curriculum targeted to their kindergarten audience - will that be continued? How will the budget for these programs get allocated?**

*The Cultural Arts Program will be delivered in the home schools. Funds currently allocated to the Kindergarten Center will be disbursed to the home schools to ensure equity in programs.*

8. **What about AIS, OT, PT, and other services?**

*There are no plans to reduce services for any of our students K-4. We will continue to allocate resources based on each building's enrollment size and the needs of our students. The movement of Kindergarten students to their home schools may actually increase some of the support services given to our Kindergarten & First Grade learners. We know that the earlier these interventions are given, the higher the success rate for our students. **Our students' success is what matters most and is our only priority.***

*All services will be delivered in appropriate spaces. Some of these spaces will be shared with other specialists, either at the same time or alternating times, depending on the schedule. The building plans available on the website reflect the spaces where these services will be offered.*

9. **What will be the impact on our Sign Language and Chinese programs?**

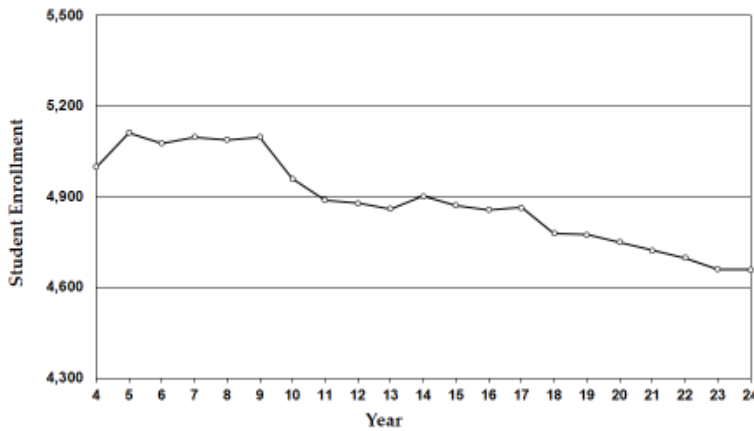
*In three of our elementary schools the programs will have dedicated spaces. At Pasadena there will not be a dedicated room in the 2016-17 school year. The teachers will be delivering the same lessons, but they will be pushing into the regular classroom. There are plans to build classrooms at Pasadena for the 2017-18 school year. This will open up a dedicated space for our elementary Foreign Language Program as well as create space for a science classroom for STEAM initiatives.*

# Enrollment

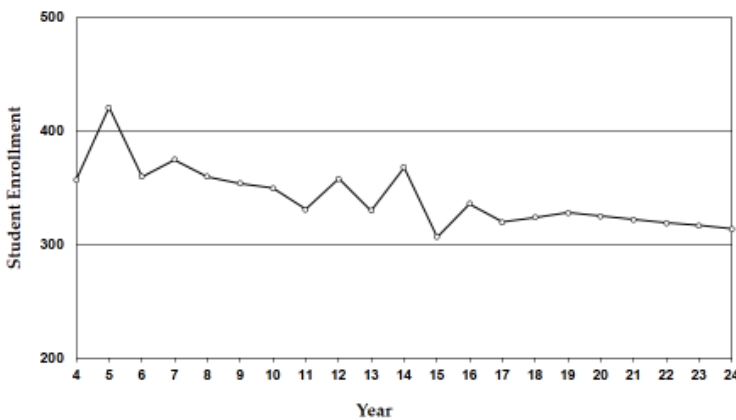
## 1. What are we projecting for enrollment into the future?

*The Board of Education had a detailed demographic study prepared by Western Suffolk BOCES that projects declining enrollment over the next 10 years. This study shows a 10-year projection as well as the actual enrollment by building for the past 10 years.*

**Plainview-Old Bethpage Central School District  
Enrollment: Grades K - 12**



**Plainview-Old Bethpage Central School District  
Kindergarten Enrollment**



*The projected Kindergarten enrollment, shown above, also reveals a decline over the next 10 years. While the enrollment for the 2014-15 school year is 375, the enrollment for the 2015-16 school year is projected by the report to be 325. As of May 20, 2015, the number enrolled for the Kindergarten class for September 2015 is 290. We have, therefore, reduced the sections by one to adhere to Board of Education guidelines.*

The elementary projected enrollment by home schools is shown below. The demographic study is available on the district website at [www.pobschools.org](http://www.pobschools.org).

Table 10 - Projected Plainview-Old Bethpage CSD Elementary Enrollment

Year	Kindergarten Center	Old Bethpage School	Parkway School	Pasadena School	Stratford Road School	Total K - 4
Current 2014	368	339	353	353	403	1,816
Projected 2015	307	335	361*	362*	408	1,773
2016	336*	339*	352	349	416*	1,792*
2017	320	325	349	356	397	1,747
2018	324	322	345	349	392	1,732
2019	328	311	332	337	380	1,688
2020	325	316	337	343	385	1,706
2021	322	313	334	340	382	1,691
2022	319	313	334	341	383	1,690
2023	317	312	333	340	381	1,683
2024	314	309	331	337	378	1,669

\* shows peak enrollment during 2015 - 2024

**2. Why are we closing the K Center when we opened it to address enrollment needs not long ago? Will we have room?**

The **K-4 enrollment** in 1995-96 and projected 2016-17 in three elementary schools is reflected in the chart below. Pasadena would have 438 students if it were a K-4 school in 2016-17.

Parkway		Stratford Road		Old Bethpage	
1995-96	2016-17	1995-96	2016-17	1995-96	2016-17
520	434	688	508	494	417

When the Kindergarten Center opened in 1996-97, Pasadena was not a district elementary school. Since that time Pasadena, with 28 classrooms, was re-opened and library extensions were built on to all of our elementary schools. When these extensions were completed, the original library spaces were converted into 2 +1/2 classrooms at Pasadena, Old Bethpage and Parkway. The 2014 bond referendum also allows for classrooms to be built at Pasadena and Parkway, if needed. This means that there have been more classroom spaces added to each building since the Kindergarten Center opened in 1996 and the buildings, ensuring our ability to accommodate the Kindergarten Center students in their home schools.

**3. Will we be redistricting to accommodate the enrollment projections?**

There are absolutely no current plans to redistrict. In the bond referendum the community voted on this past December, we included funds to add up to 2 new classrooms at Pasadena or

*Parkway. If we need extra classes at Old Bethpage we would be able to accomplish this addition within the capital portion of the budget.*

**4. What is happening with the planned Beechwood development?**

*Plans for the Beechwood development were approved by the Town of Oyster Bay on May 12, 2015. The bulk of the new homes in the new development are age restricted and are therefore unlikely to have school aged children. The developers have committed to paying the district \$6 million dollars to allow us to build extra space, among other things, should the need occur. The first \$2 million payment is due the day they break ground on the project, which means the district will have adequate time to plan and build if necessary. In addition, school zoning for the new development has not yet been determined by the Board of Education.*

**5. When the Hamlet was open over 100 students came with it, how have you planned for the increased enrollment from County Pointe?**

*In 2001 when the Hamlet was opened we received 8 students. There are 397 homes there and the maximum number of students we have received from that community, to date, is 85. The County Pointe development will have 132 non-age restricted homes. If the enrollment pattern follows that of the Hamlet we anticipate a maximum enrollment of 45 students K-12 over time. This development has not been zoned for the POB elementary school of attendance.*

**6. What is the current average elementary school class size, and how will class sizes change?**

*The average class size in our elementary schools is 20.5. Kindergarten class sizes have been on average 20-22 students. The Board of Education has established the following guidelines (minimum and maximum) for class sizes. These guidelines will be adhered to in planning for the K-4 schools.*

<i>Primary Grades K-2</i>	<i>18-24</i>
<i>Elementary Grades 3-4</i>	<i>20-28</i>
<i>Intermediate Grades 5-6</i>	<i>23-28</i>

**7. How many times in the past years have you had to open an additional section within a grade due to population increases over the summer?**

*Each year we plan for 2-3 breakage positions in our budget to accommodate increased enrollment. Over the past three years we have used less than the allocated numbers in our budget.*

**8. Will moving Kindergarten into the elementary schools create larger class sizes?**

*The Board of Education has established the following guidelines (minimum and maximum) for class sizes. These guidelines will be adhered to in planning for the K-4 schools.*

<i>Primary Grades K-2</i>	<i>18-24</i>
<i>Elementary Grades 3-4</i>	<i>20-28</i>
<i>Intermediate Grades 5-6</i>	<i>23-28</i>

9. Will each school have four sections of Kindergarten?

*The number of sections will be determined by enrollment, and guided by the Board of Education guidelines for class size. Kindergarten class sizes typically fall between 20-22 students.*

10. How have you been projecting the enrollment into the future?

*Every five years the Board of Education request a demographic report in order to plan appropriately to accommodate the needs of students. The district conducted two demographic studies over the past two years as well as conducted a census. The information gleaned from these reports was used to generate the final projections. The 2015 demographic report is available on the district website at [www.pobschools.org](http://www.pobschools.org).*

11. Once the K classes have been folded in, how close to “maximum capacity” are each of the schools? (for this we need exact numbers...meaning, based on enrollment estimates, how much of a “spike” in additional students can each school fit before it causes problems?)

*Each school can accommodate 5 Kindergarten classes. Our current enrollment projections show 4 classes needed in each school for the next 10 years. In the bond referendum the community voted on this past December, we included funds to add up to 2 new classrooms at Pasadena or Parkway. If we need extra classes at Old Bethpage we would be able to accomplish this addition within the capital portion of the budget.*

12. What are the chances that re-zoning will be required due to larger than expected enrollment in one of the smaller elementary schools?

*The current projected enrollments **do not indicate a need for re-zoning**. There is room in all elementary schools to accommodate the projected numbers. See demographic report posted on the district website at [www.pobschools.org](http://www.pobschools.org).*

13. How many additional students, (by school), above the current projected enrollment, would need to enroll, for the district to go above the current class size after this change?

*The table below shows the highest enrollment year for each of our elementary schools, in the past 20 years. For example Old Bethpage had an enrollment of 500 students in 2007-08 and would have a K-4 enrollment of 387, if it were a K-4 building in 2015-16.*

Grade	Old Bethpage		Parkway		Pasadena		Stratford	
	2007/08	2015/16	2006/07	2015/16	2004/05	2015/16	2008/09	2015/16
<b># Rooms</b>	23	19	21	20	22	21	25	21
<b>K</b>	5	4	4	4	5	4	5	4
<b>1</b>	4	4	5	4	4	5	6	5
<b>2</b>	5	4	4	4	5	4	5	4
<b>3</b>	4	4	4	4	4	4	5	5
<b>4</b>	5	3	4	4	4	4	4	3
<b>Enrollment</b>	500	389*	425	439*	485	460*	553	460*

*\* Enrollments show K-4 for each of the elementary buildings based on our current projected enrollment as of May 15, 2015. K-Center enrollment is currently projected at 320 students even though we currently only have 290 enrolled.*

14. What will happen to the class sizes in the building? Are we ensuring that the size of the classes don't rise – especially in order to free up physical classroom space?

*Our historical enrollment demonstrates the district's commitment to maintaining class sizes at the current averages. Additionally it should be noted that the 2001 bond added a library extension to all elementary schools. When these extensions were completed, the original library spaces were converted into 2 1/2 classrooms at Pasadena, Old Bethpage and Parkway. This means that there are more classroom spaces added to each building since the Kindergarten Center opened in 1996. The 2014 bond referendum also allows for classrooms to be built at Pasadena and Parkway, if needed.*

## Transportation

1. What are the transportation savings?

*Transportation is based on the number of buses we hire for the day. A lost Kindergarten Center run does not affect our cost; however, it could allow us to re-deploy the available buses to begin another run at the high school at no additional cost, should a 9 period day be implemented.*

2. What are some of the changes that will be made to transportation to accommodate this new schedule?

*Transportation was and is a part of this decision, not so much in dollar savings but in flexibility and an improved school day for our children*

*Today many children from the Parkway and Old Bethpage home schools **spend over 90 minutes** getting to and from the Kindergarten Center each day. With the move to their home schools they will spend **20 minutes or less** each way.*

*For parents that have 2 or more children close in age, one in Kindergarten and the other in Grades 1,2,3,4, they will now only have to put their children on one bus in the morning and they will all get dropped off at the same time in the afternoon. This will allow parents to better manage their time and we hope provide more opportunities for playing, socializing and learning at home. Reading for just 20 more minutes a day with your Kindergarten and 1<sup>st</sup> Grade child can have a significant impact on their early childhood development and reading, which leads to greater success in the future..*

3. Will we have monitors on the buses the first few weeks of school similar to what we have now at the K-Center?

*There will be the same number of monitors available for oversight of Kindergarten students during the critical first weeks of school. There are currently 14 Kindergarten bus runs and 14 monitors available. These monitors will rotate through the 40 elementary bus runs during the first weeks of school to carry out their duties and acclimate the Kindergarten students to similar transportation procedures.*

4. The only age group where a parent is required to release a child at the bus stop is the kindergarten students. What will happen when all the students ride together? How will the kindergarten students be identified? What will happen if a 4<sup>th</sup> grade sibling gets off the bus with the child? Do we still wait for a parent? Or will we be extending our practice that all students K-4 require a parent at the bus stop?

*The current practice for Kindergarten drop off at bus stops will remain in effect, i.e., Kindergarteners must be greeted by an adult otherwise they will be returned to their home schools. Parents wishing to have their Kindergarten students walk home with their Grade 3 or 4 sibling, must provide a letter to the school at the start of the school year.*

5. Can 3<sup>rd</sup> or 4<sup>th</sup> grade siblings/neighbors take the Kindergartener to their home rather than a parent?

*Parents wishing to have their Kindergarten students walk home with their Grade 3 or 4 sibling, must provide a letter to the school at the start of the school year.*

6. Is there enough room on the bus runs to accommodate the additional children?

*Yes. Each year transportation revisits enrollment and bus ridership in allocating resources and determining transportation needs. We will ensure that there will be enough room on all buses.*

7. Will Kindergarteners have assigned seats? How will they be identified as such?

*Kindergarteners will be assigned to the first rows of the buses. A name tag will be provided to the Kindergarten students so that they could be easily identified by the drivers. Monitors will also assist in the orientation during the first weeks of school.*

8. When the Kindergarten students are transported on the same school bus as the elementary school students, how will we insure that they will be identified as Kindergarten students? If they are given assigned seats, how will that be monitored?



*Students will be assigned seats in the first few rows of each school. The identified seats will be for Kindergarten students only. The principals will address the practice at their individual orientations and address concerns with parents and child.*

9. **Currently, the District provides bus matrons on all kindergarten routes for the month of September to teach the students how to buckle their seat belts, as appropriate bus behavior, emergency procedures and identifying their bus stop. We currently have 14 kindergarten routes. When we make the change for 2016-17 school year, will we still be providing bus matrons for the 40 elementary school routes for the month of September?**

*Matrons were initially put on the kindergarten routes when the Kindergarten Center was opened, as the students had no older models to follow. The concern initially was that children were leaving their neighborhoods and traveling some distance on the school bus. The matron helped with the transition and taught students appropriate bus behavior.*

*There will be the same number of monitors available for oversight of Kindergarten students during the critical first weeks of school. There are currently 14 Kindergarten bus runs and 14 monitors available. These monitors will be rotated through the 40 elementary bus runs during the first weeks of school to carry out their duties and acclimate the Kindergarten students to transportation procedures.*

## **Scheduling**

1. **What will the start and end times be for the elementary K-4 schools?**

*Start times should remain close to the current start times of 2014-15 school year. Should the Board of Education consider an implementation of a 9-period day at the high school, starting times could be reviewed but will fall no greater than 10 minutes difference from the current start times.*

2. **What will the lunch schedule be for the elementary schools? When will the students eat? Surely having another grade level in the school will make an additional lunch period. I would want to avoid kids eating very early or late just because there is a problem with space.**

*The schedule will accommodate a full grade level having lunch and recreation together in each lunch period.*

- 3 **How will recess time work with regard to play structures at non Stratford-Kindergarten children?**

*The same schedule will exist in all schools. Children will go to lunch with their grade level peers and then go out to recreation, supervised. The playground will be appropriate for the grade levels using them.*

## Cost Savings

1. Will there be cost savings as a result of the configuration? Will there be any Staff cost savings with this change and if so, what is it projected to be?

*During the Structural Review Committee deliberations the projected savings for moving to K-4 schools was \$488,000, mainly due to administrative cost savings. Programs and services will be delivered at the same level in all K-4 schools so staffing changes will be minimal.*

2. Is the district doing this to try and save money?

*While the district will save some money, mainly in administrative costs, this is not the driving force behind this decision. There are numerous educational reasons for this decision. This is not to say the existing Kindergarten Center model is broken, but that we feel our Kindergartners will be better served in their home schools. (See educational reasons above)*

3. Will there be building maintenance cost savings with this change, and if so what is it projected to be?

*The building maintenance cost will remain as the district will use the Kindergarten Center space for office spaces and professional development purposes.*

4. How will the money that will be saved by closing the Kindergarten Center be allocated? (would it be allocated to staff, bldgs. transportation, books, supplies, etc.).

*The Board of Education will determine how funds saved through reorganizing will be allocated. The SRC report recommended that the funds be used to provide transportation for a 9-period day at the high school.*

5. I would like to understand exactly why the district is looking to “fold” the center. What are the perceived cons and pros from the standpoint of the school district? If it is monetary, what will be saved and what specifically done with the funds? How much will the change cost?

*The driving force behind closing the Kindergarten Center is reducing the transitions children and parents need to make during their early years of learning; ensuring continuity of service providers and enhancing vertical articulation among staff members. The long transportation ride experienced by Old Bethpage and Parkway students (over 40 minutes each way) serves as an additional incentive to consider a new structure for K-4. While there are funds to be saved, the financial considerations are not the driving force. Increased opportunities for students and enhanced learning outcomes are at the center of the decision.*

## Staffing

1. How will staff be assigned from the K-Center to the elementary schools?

*Central Office has worked with the building principals to generate a comprehensive plan for assigning staff to new home schools. This includes asking the Plainview Congress of Teachers (PCT) to provide input to the plan and to complete a survey of school choice.*

2. Will positions be eliminated as a result of the K-4 changes? Clerical? Custodial? Library? Lunch aides? Nurse?

*The recommendation will be to add a .5FTE clerical to each elementary school and an additional .5 FTE Assistant Principal. This would mean that all elementary schools would now have full time Assistant Principals. A school nurse position would be eliminated in 2016-17. It should be noted that a floating nurse position was added for the 2015-16 school year. That position would remain; however a staff member would be eliminated in the transition. It would also be a recommendation to add a .5 FTE lead librarian to oversee the K-12 information centers in 2016-17 school year. All other staffing would be unaffected.*

3. What about jobs?

*As we outlined, class sizes and services will remain the same so staffing levels will be maintained. The K Center classroom teachers will be moved to the various elementary schools, as will those providing support services.*

## Building Space

1. Is there room at the elementary schools to accommodate the kindergarteners?

*Yes, we have excess capacity in our elementary schools. The presentation at the forum will provide detailed plans on which rooms will be used and which rooms services will be provided. These plans are being painstakingly put together with each Principal, making sure the needs of our students are first and foremost considered. The Principals have invited PTA leaders to walk the buildings to show where all classes and services will be delivered in a K-4 plan.*

2. What will happen to the space at the K-Center?

*There will be no out-of district use at the Kindergarten Center. The recommendation will be to use the space for offices such as Athletics, Child Care, Transportation and professional development purposes.*

3. Will there be bathrooms in the kindergarten classrooms? If not, will they be built?

*The Kindergarten classes in the home schools will be the same classrooms that were used prior to the opening of the Kindergarten Center. They all have functioning bathrooms appropriate for the student use.*

4. Is there enough room in the elementary libraries to house all the appropriate kindergarten related books coming from the elementary schools without having to reduce the books available for grades 1-4?

*The new libraries are more than adequate to meet the 21<sup>st</sup> century needs of the K-4 learners. Any new materials needed for Kindergarten students will be either added from Kindergarten Center inventory or purchased to increase the collection. Funds allocated for the Kindergarten Center currently would be disbursed to the buildings.*

5. Will all support services providers have a similar room to what they have now? Ex. Speech teacher?

*All providers will deliver services in appropriate spaces that honor the work of children and staff, as is currently our practice.*

6. Will we need to add classrooms to accommodate the incoming classes/staff?

*We have adequate room to accommodate staff and children at the current time. We have funds set aside in the bond referendum that will allow us to add classroom space if needed in 2017-18.*

7. Will any Music, Art or Language classes be on a cart?

*There will continue to be dedicated spaces in all elementary schools for Art and Music. Assuming the same budgetary climate as currently exists, all services currently being offered will continue, and hopefully be enhanced as we look to improve offerings in all of our programs. One of our enduring qualities as a district is our commitment to Music and Art; that is an essential feature of all future plans for our district.*

*With the exception of Pasadena all language classes will also have a dedicated room. At Pasadena language classes will be delivered in the regular classrooms in 2016-17. It is recommended that in the 2017-18 school year Pasadena add two classrooms by using funds allocated in the bond referendum. This would provide a dedicated language space and additional room for future needs.*

8. Support Classes (OT/PT/Speech/Language) – will any classes be made smaller? Will these services be moved to a cart? Some services like PT require an amount of space for exercise that students need to have. Essentially I want to be assured that the spaces will be more than adequate for the services that the students are receiving.

*All services will be delivered in appropriate spaces, honoring the important work that will be done by staff and students. Some of these spaces will be shared with other specialists, either at the same time or alternating times, depending on the schedule. The building plans available on the website reflect the spaces where these services will be offered.*

9. Can the Whitsons staff accommodate the added enrollment?

*Staffing from the Kindergarten Center will move with the students to their home schools. Whitsons will evaluate the service needed for the increased population and staff accordingly.*

**10.OT/PT have a dedicated space?**

*All services will be delivered in appropriate spaces, honoring the important work that will be done by staff and students. The building plans available on the website reflect the dedicated spaces where these services will be offered.*

**11. Will there be additional security or aides at each of the elementary schools?**

*Aides servicing the Kindergarten students will deliver these services in the home schools. There are no plans to increase staffing in this area.*

**12. Once the K classes have been folded in, how close to “maximum capacity” are each of the schools (for this we need exact numbers...meaning, based on enrollment estimates, how much of a “spike” in additional students can each school fit before it causes problems?)**

*Pasadena Elementary will have all classrooms used when the Kindergarten students are returned to their home schools. That enrollment is projected to be 438. While all classrooms will be used, they will not be at capacity according to the Board of Education guidelines.*

**13.What needs to be moved within the existing elementary schools to accommodate the Kindergarteners?**

*Furniture, classroom materials and supplies need to be moved to accommodate the Kindergarten classes. There will also be some construction work needed as the former Kindergarten classes are restored. (See building capacity report available on the website)*

**14. How will the classroom size within the elementary schools compare to the size of the K Center rooms? If the classrooms are smaller, will the class size decrease?**

*The Kindergarten Center was originally a part of POB Middle School, thus some of the Kindergarten Center classrooms are larger than the elementary classrooms. The elementary schools were constructed with designated Kindergarten classrooms. They meet all specifications for a Kindergarten classroom space and are comparable in size to Kindergarten classrooms in Nassau County.*

**15. What is the current classrooms utilization we have in the District today, and how many extra classrooms do we have that are not in use? What will the classrooms utilization be after this change, and how many extra classrooms will we have that are not in use?**

*All elementary schools have a minimum of 4 classrooms available for use as Kindergarten classes. The building capacity report available on the website provides details by building.*

**16. What support services (PT, OT, speech, social), that currently have dedicated space in the elementary or K Center will not have the dedicated space after this change? If any, will this loss be mitigated by another changed?**

*All services will be delivered in appropriate spaces, honoring the important work that will be done by staff and students. The building plans available on the website reflect the dedicated spaces where these services will be offered.*

**17. What special classes (Language, Art, etc.) that currently have dedicated space in the elementary of K Center will not have the dedicated space after this change? If any, will this loss be mitigated by any other change?**

*There will continue to be dedicated spaces in all elementary schools for Art and Music. Assuming the same budgetary climate as currently exists, all services currently being offered will continue, and hopefully be enhanced as we look to improve offerings in all of our programs. One of our enduring qualities as a district is our commitment to Music and Art; that is an essential feature of all future plans for our district.*

*With the exception of Pasadena all language classes will also have a dedicated room. At Pasadena language classes will be delivered in the regular classrooms in 2016-17. In the 2017-18 school year Pasadena will have a dedicated language space as two classrooms will be added as a result of the passed bond referendum.*

*The building plans available on the website reflect the dedicated spaces where these services will be offered.*

**18. Will there be any changes to the current K Center playground? Will the Stratford kindergartners use that space?**

*There will be no changes made to this space and the Kindergartners at Stratford Road will have access to this space. We will evaluate all playgrounds and upgrade the other playgrounds if a need is indicated.*

**19. Is the playground equipment appropriate/safe for 4 year olds?**

*All equipment for our playgrounds are evaluated annually to ensure safety. If needed, additional equipment will be added to accommodate the early years.*

**20. Would there be any difficulty to roll back changes to prevent the district from re-instituting the K Center if overcrowding at one school occurs, or will re-districting be the suggested approach if that were to occur?**

*The demographic report indicates that our enrollment is declining and that the buildings will be able to house our K-4 population for the next 10 years,. There is no need to entertain plans to redistrict as our needs will be met with the current building capacity.*

**21. What is the expected use of the existing K Center space after this change? Will the space be leased out?**

*The building will be utilized for in-district needs, as determined by the Board of Education. The classrooms will not be leased.*

22. With reading, sign language and ESL rooms being taken away, exactly how and where will those services be given?

*All services will be delivered in appropriate spaces, honoring the important work that will be done by staff and students. The building plans available on the website reflect the dedicated spaces where these services will be offered.*

23. Are there any issues concerning lunch room capacity that would force any major changes to lunch schedules (i.e., requiring a morning and afternoon shift?)

*There are no issues with the cafeteria. Students will eat lunch with their entire grade level peers.*

24. If additional rooms need to be built in the schools, (i.e., unexpected high enrollment over the summer) but there is no time to build the room before the school year starts, where will additional students be placed in the interim?

*The demographic report indicates that our enrollment is declining and that the buildings will be able to house our K-4 population for the next 10 years. In addition, the bond referendum and budget will support additional classrooms for the 2017-18 school year.*

25. Will we be able to handle this many children for PE & lunch?

*There are no issues with the cafeteria. Students will eat lunch with their entire grade level peers. There is room in our cafeteria and gymnasiums for the Kindergarteners. If it turns out that our cafeteria vendor has issues delivering lunch in a timely fashion, we will work with them to make sure we add whatever resources and staffing we need.*

## MISCELLANEOUS

1. What is the reason that this proposal must be voted by this board?

*The Board of Education is the governing body for the district and as such makes decisions as to how the educational program will be organized and supported.*

2. What is the contingency plan in the event that population grows way beyond expectations ~ beyond what can be absorbed by the elementary schools, even with the addition of classrooms as allowed by the bond?

*The demographic report indicates that our enrollment is declining and that the buildings will be able to house our K-4 population for the next 10 years. In addition the bond referendum and budget will support additional classrooms for the 2017-18 school year. **In fact**, our buildings*

*will have less enrollment than they had the year prior to the Kindergarten Center opening. Since that time Pasadena was opened and we have added more classroom spaces to all the buildings when the new libraries were constructed.*

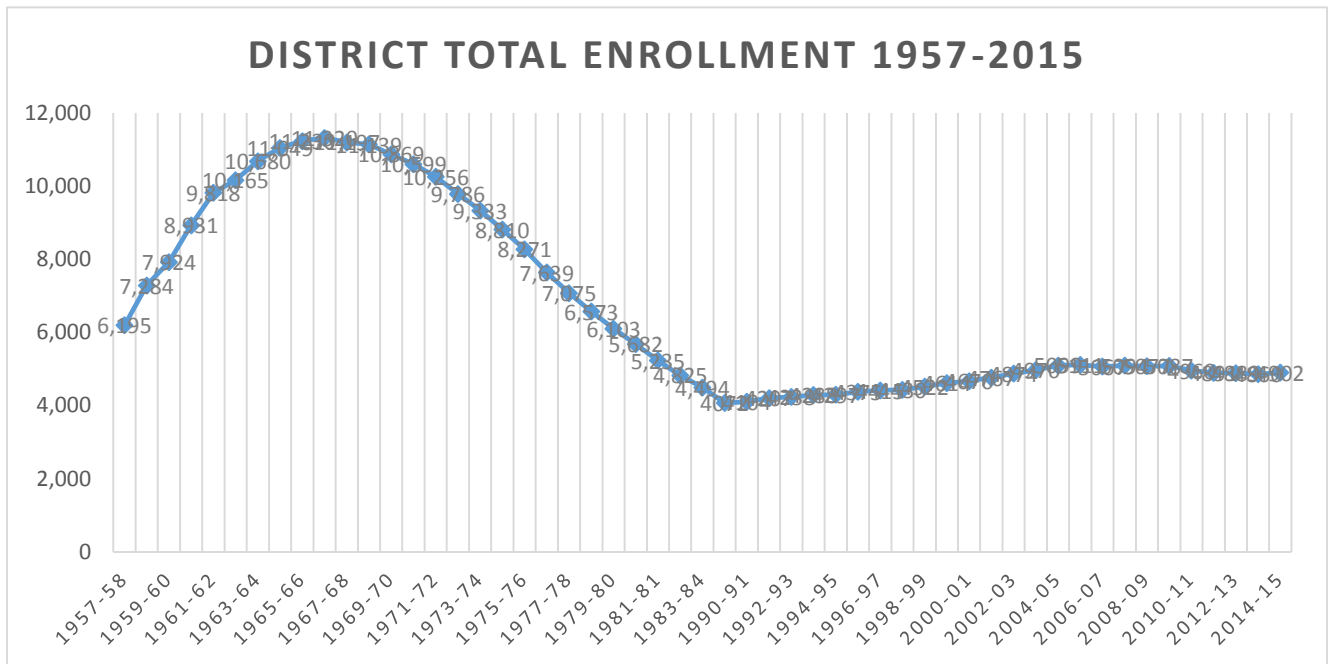
3. I didn't grow up here, but from talking to people who did, it seems like schools were opening/closing every few years to meet the changing needs of the community when we were kids. Joyce Road, Jamaica Ave, Fern Place, etc. I know those buildings are all used by other institutions now - but could the district reclaim them if the need arises? A portion of the community seems to be very against more openings/closings/rezoning. But it seemed to happen a lot back then and no one seems to talk about these transitions as if they were terrible to live through. Can anyone comment on the historical perspective and draw any connection to the questions we're facing today?

*The district enrollment peaked in 1967-68 school year at 11,197 when we had ten (10) K-4 elementary schools. As with many communities on Long Island, the enrollment patterns have changed since that time and we now have an enrollment of 4933 for this school year. Aging schools were sold and two remain as rented properties, Jamaica Avenue School and Fern Place. Both facilities are rented out to several institutions and Jamaica Avenue houses the POB Senior Citizen Center. The Jamaica Avenue closed in 1993 and Stratford Road was opened as an elementary school the following school year. These facilities have aged and it would require a significant source of revenue to bring them up to the standards for housing our students.*

*Below you will find the actual dates of closing of 6 of our elementary schools, due to a decrease in enrollment. Pasadena was later reopened in 2000.*

<u>Building</u>	<u>Closed</u>
Central Park Road	6/76
Manetto Hill	7/71
Oak Drive	6/76
Joyce Road	7/78
Little Red Schoolhouse	
Fern Place	7/74
Pasadena	7/81





*The chart above shows the historical data and our demographic projections (available on the website) provides information for the next ten years. When taken together, both pieces of data indicate that **our elementary buildings will be able to handle the projected enrollment.***

4. **Redistricting** – While I heard it is not on the table at the moment, there are concerns that Pasadena may be too small and that redistricting may take place to solve the overcrowding issue in the near future. Is there a guarantee that we can have in order to not rezone or redistrict the schools?

*The demographic report (available on the website) indicates that our enrollment is declining and that the buildings will be able to house our K-4 population for the next 9 years. In addition the bond referendum and budget will support additional classrooms for the 2017-18 school year. **There are no plans for redistricting now or in the next 10 years. There is no need.** Our buildings will have less enrollment than they had the year prior to the Kindergarten Center opening. Since that time Pasadena was opened and we have added more classroom spaces to all the buildings when the new libraries were constructed.*

## References

- Burkam, David T., Michaels, Deborah L.& Lee, Valerie E., (2007) *School Grade Span and Kindergarten Learning* . *Elementary School Journal* , 107(3), 287- 303
- Epstein, J.L (1990). *What matters in middle grades-grade span or practices?* *Phi Delta Kappan*, 71(6), 438-444
- Entwisle, D.R & Alexander,K.L. (1998) *Facilitating the transition to first grade: The nature of transition and research on factors affecting it.* *Elementary School Journal*, 98(4),351-364
- Paglin,C & Fager, J, (1997) *Grade Configuration: Who goes Where? Portland OR: Northwest Regional Educational Laboratory, (ERIC Document Reproduction Service No. ED 432 033)*
- Pianta, R.C., Cox, M.J., Taylor, L., & Early, D. (1999) *Kindergarten Teachers' practices related to transition to school: Results of a National Survey.* *Elementary School Journal*, 100(1), 71-86
- Sink, C., Edwards, C.N., Weir Sarah, J. (2007) *Helping Students Transition from Kindergarten to First Grade.* *Professional School Counseling*, Vol.10 (3)